

SURVICE METROLOGY

SURVICE was founded with a focus on applying systems engineering services to support the design, development, testing, and fielding of U.S. combat systems, making them safe, survivable, and effective.

SURVICE currently employs nearly 400 personnel in offices across the United States. These personnel include recognized experts in a wide range of aircraft, ground, and sea systems.

SURVICE Metrology is a division of SURVICE that was established after years of using dimensional inspection equipment in our core business areas. This unique group comprises engineers and other technical specialists with decades of high-precision metrology experience.

CONTACT US



To learn more about SURVICE Metrology, visit us at <http://metrology.survice.com>, email us at metrology@survice.com, or call us at 410-297-2378.



CanQual Certified



10-2016

DIMENSIONAL METROLOGY

& REVERSE ENGINEERING

Beyond Measure™



SURVICE ENGINEERING

Corporate Headquarters

4695 Millennium Dr.
Belcamp, MD 21017-1505
metrology@survice.com
410-273-7722

METROLOGY LOCATIONS

Atlantic Coast Facility

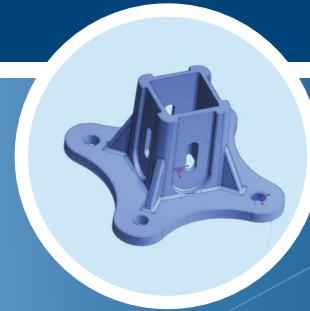
4694 Millennium Drive
Suite 510A
Belcamp, MD 21017
410-297-2378

Gulf Coast Facility

1819 Lewis Turner Blvd.
Fort Walton Beach, FL 32547
850-362-6920

Great Lakes Facility

1397 Piedmont Drive, Suite 400
Troy, MI 48083
248-509-7970



METROLOGY'S MISSION

SURVICE Metrology is a world-class business unit of the SURVICE Engineering Company that provides full-service dimensional inspection services, modeling, custom-engineered solutions, and advanced research and development capabilities in the field of metrology.

TECHNOLOGY

SURVICE Metrology's full suite of metrology tools includes:

- ▶ Laser trackers
- ▶ Laser radars
- ▶ Laser scanners
- ▶ Coordinate measuring arms
- ▶ Photogrammetry
- ▶ 3-D printing
- ▶ Indoor GPS (iGPS) tools
- ▶ Fixed-bridge coordinate measurement machines (CMMs)
- ▶ X-ray CT scanners
- ▶ Structured light scanners



CAPABILITIES

SURVICE Metrology's wide range of capabilities includes:

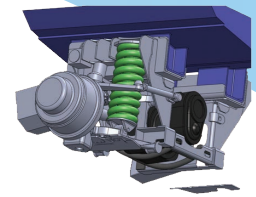
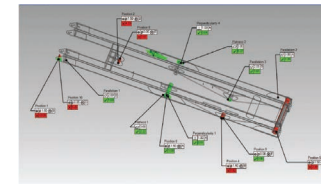
- ▶ High-precision dimensional inspection
- ▶ Industrial manufacturing support
 - Hydroelectric power generation
 - Aerospace and automotive support
 - Jig and fixture setup and verification
- ▶ Scanning
 - Forensics investigation
 - Antiquities measurements/analyses
 - Pre- and post-event comparative analyses
- ▶ Reverse engineering
 - 3-D geometry modeling
 - Technical data package development
 - Military target exploitation
 - Rapid prototyping
- ▶ Structural and fluid dynamics simulation
- ▶ Industrial manufacturing systems integration
 - Custom installations
 - Research and development

EXAMPLES OF WORK

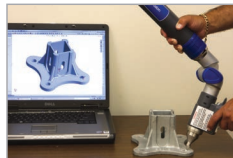
Dimensional Inspection and Reverse Engineering



SURVICE uses the latest metrology technologies to digitally scan, probe, and inspect physical objects. From laser tracker measurements and raw point cloud scans to manufacturing-ready technical data packages and digital CAD models, we provide the products that meet customer requirements.



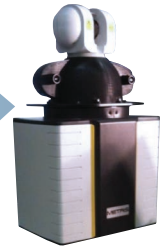
Rapid Prototyping and Additive Manufacturing



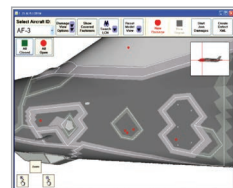
In addition to creating digital models, SURVICE combines in-house 3D printing capability and access to manufacturing partners to provide rapid prototyping and final/finished products.



3D PRINTING SYSTEM
 • 16-µm high resolution
 • Size: 260×260×200 mm



Custom Applications



SURVICE has the expertise and resources to develop custom metrology solutions for a wide range of applications. We work on leading-edge tools for manufacturing and maintenance activities.

